



Hazlemere Marina, Waltham Abbey, EN9

BUTLER & STAG



**Positioned in the highly sought after development, this stunning one bedroom apartment is located a short walk from Waltham Cross British Rail Station.**



## Leasehold

- Second Floor Apartment
- One Bedroom
- Stunning Throughout
- Balcony
- Long Lease
- Open Plan Kitchen/lounge Area
- Chain Free

Arranged over one floor and spanning just over 570 sq ft, this stunning property is finished to a high standard throughout. The apartment comprises of one double bedroom, a bright open-plan living/kitchen area with double doors leading onto the fantastic east facing private balcony and a contemporary luxury bathroom completes this stunning flat.

Externally there is one allocated parking bay in the small private carpark as well as free cycle storage to enable you to enjoy the River Lea cycle path. Adjacent to the apartment you will also find on street parking. The Flat also offers access to a large lake and a public park just a stones throw away.

The property is located in the highly sought after Hazlemere Marina development and offers direct footpath access to River Lea. The luxury apartment is only approx. 8-10 minute walk to Waltham Cross Station and close to the M25 providing excellent transport opportunities.

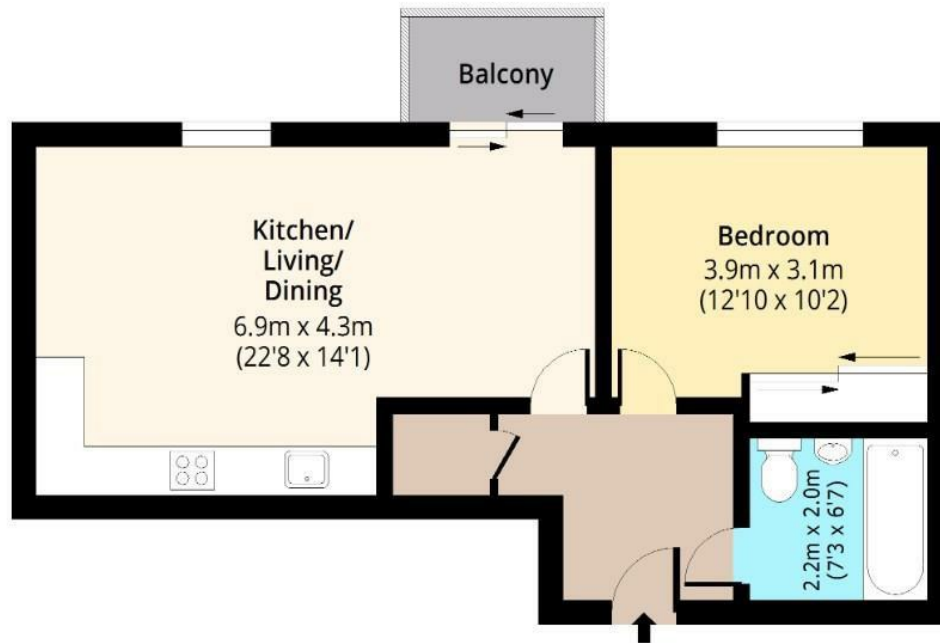




# Waterfront Court

## Second Floor

Approx. 53.14 Sq. meters (572 Sq. feet)



Total area: approx. 53.14 Sq. meters (572 Sq. feet) (Excluding Balcony)

Total area: approx. 56.11 Sq. meters (604 Sq. feet) (Including Balcony)

For illustration purposes only - not to scale

[www.lpaplus.com](http://www.lpaplus.com)

IMPORTANT NOTICE - These particulars have been prepared in good faith and they are not intended to constitute part of an offer or contract. We have not performed a structural survey on this property and the services, appliances and specific fittings have not been tested. All photographs, measurements, floor plans and distances referred to are given as a guide and should not be relied upon.

# BUTLER & STAG

☎ 01992 667666

🏠 4 Forest Drive, Theydon Bois, Essex, CM16 7EY

✉ [theydon@butlerandstag.com](mailto:theydon@butlerandstag.com)

[www.butlerandstag.uk](http://www.butlerandstag.uk)